

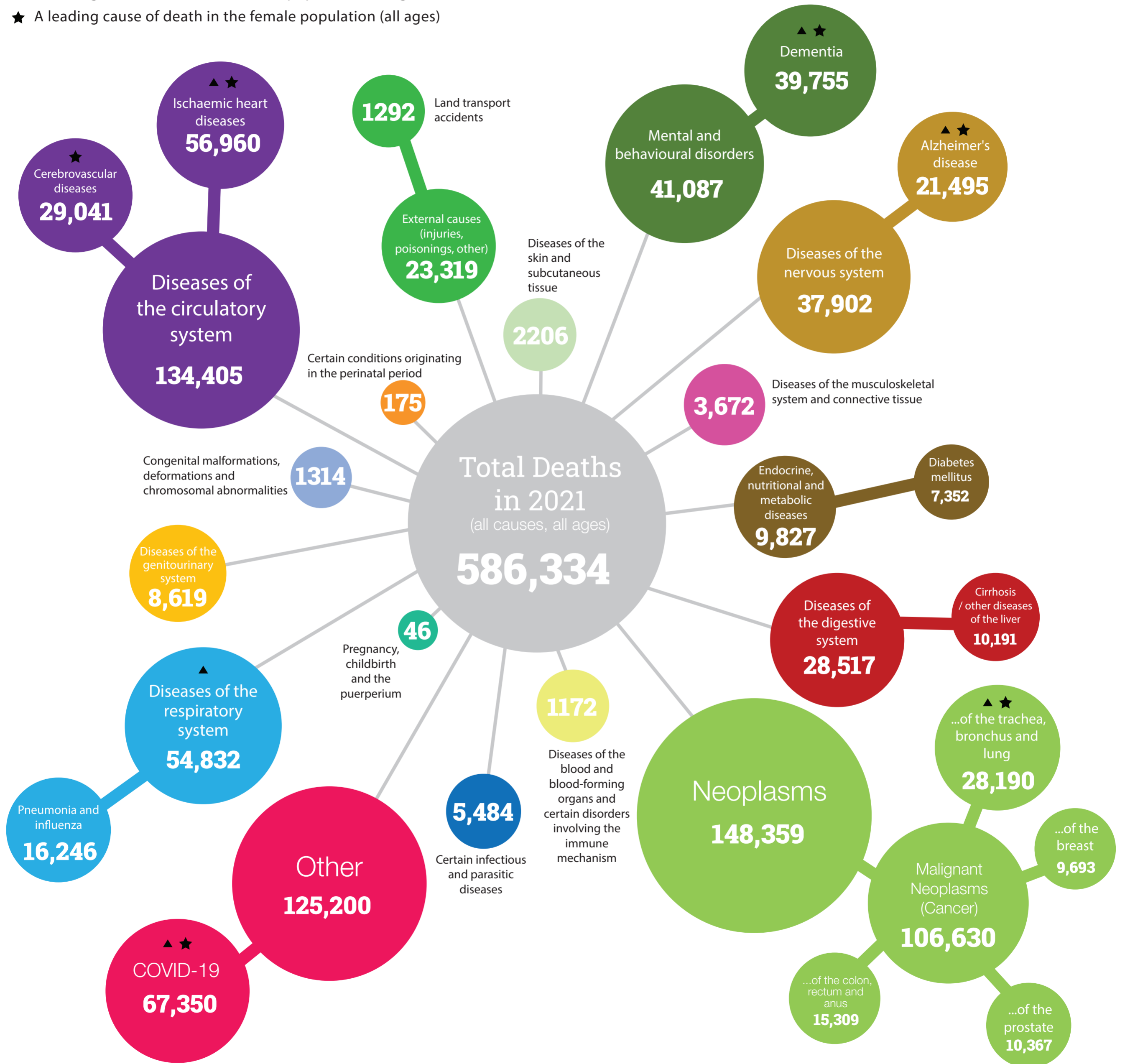
MORTALITY STATISTICS 2021

Figures show total number of deaths registered in England and Wales in 2021 by underlying cause*



ESTATESEARCH

- ▲ A leading cause of death in the male population (all ages)
- ★ A leading cause of death in the female population (all ages)



*Source data: <https://www.ons.gov.uk/peoplepopulationandcommunity/birthsdeathsandmarriages/deaths/bulletins/deathsregistrationsummarytables/2021>

Chart design credit: The Guardian - <https://www.theguardian.com/news/datablog/2012/nov/06/deaths-mortality-rates-cause-death-2011>